



1. Overview

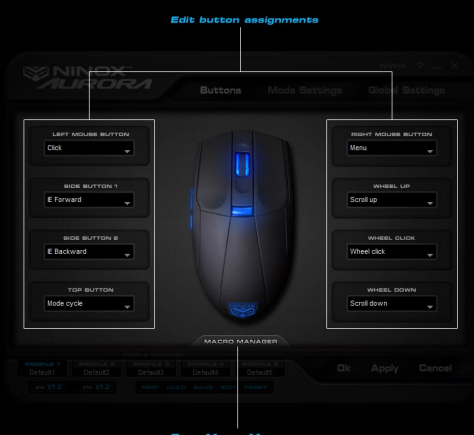


Profile slots

Profile options: Choose options for the selected profile slot

- New:** Create a new profile
- Load:** Load a profile from disk
- Save:** Save profile to disk
- Edit:** Change profile name and link a program
- Reset:** Resets all profile slots to default settings

2. Buttons



Open Macro Manager

3. Mode Settings

- Sensitivity:** Choose DPI step for selected mode
- Assign:** Add selected mode to mode cycle/up/down button function
- Mode selection:** (MODE 1, MODE 2, MODE 3)



LED Pulse setting

LED Brightness setting

Advanced: Custom colour mixer [1000 possible colours]

Basic: Choose from 8 preset colours

4. Global Settings

USB Polling Rate
Higher USB Polling Rate results in smoother mouse movement and lower input latency. Please note that some computers are not compatible with 1000Hz. If you experience problems with 1000Hz, try 500Hz instead.



Windows Control Panel Settings

For convenience, common control panel settings can be changed here. For maximum cursor precision, we recommend disabling 'Enhance pointer precision' and setting pointer speed to 0.